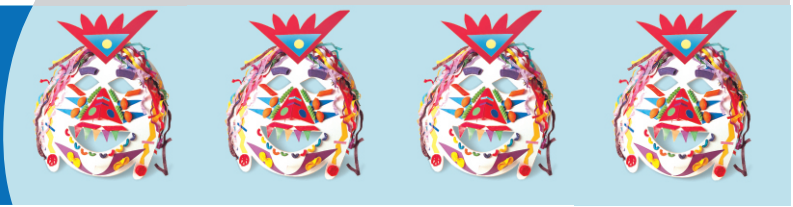


No. 52010

# African Masks



## Create a collage you can wear!

Decorate your mask with a variety of art parts such as scrunched up bits of tissue paper, **2111 Art-A-Roni**, **2171 Shredded Tissue**, yarn, **2131 Bright Buttons**, and **15630 Double Color Mosaic Squares**.

Worn to celebrate victories in battle, ward off evil spirits, and dramatize stories, traditional **African Masks** were often made from wood by special artists. Before decorating your masks, study some African folk tales and talk about ways to represent different characters or feelings with masks. Dramatize an African legend while wearing your completed masks. Tip: Check your local library for African folktales by Verna Aardema or Gail E. Haley. Tip: Act out the legend of Abiyoyo as told by Peter Seeger – have fun making masks to represent Abiyoyo and develop sound effects to use while telling the story. Tip: Masks are a popular tradition in many cultures – take a look at the way masks have been used in Native North American, Asian and Indian cultures.

Make monster masks and decorate them to look as fierce or friendly as you'd like!

Create a mask to represent a character from a story, poem or play. Tip: Wear your masks during a classroom dramatization of a favorite story.

Celebrate Mardi Gras! Take a look at some Mardi Gras photos and note the elaborate masks celebrants wear. Make your own Mardi Gras masks to decorate your room or school halls. Tip: Add some sequins and feathers to give your masks sparkle and pizzazz!

Make animal masks. Create manes with Roylco's **2171 Shredded Tissue**. Form whiskers with yarn or chenille stems. Add an authentic look with **15250 Really Big Animal Skins Paper** or **22015 Animal Print Felt**. Tip: Trace around a flat mask onto a sheet of animal craft paper, cut out eye and mouth holes, then glue the paper to the mask. Tape or staple chin and head, then finish decorating. Tip: Don't forget to add some animal paper ears!

Use as a base for papier-mache mask making projects. Tape on a cardboard egg cup nose and cover it with papier-mache paste. Add some thick papier-mache eyebrows. When dry, paint and decorate.

Accessorize! Punch a hole in each side of the mask and add **2181 Silly Spring** earrings or loop some **2170 Brilliant Beads** and **2131 Bright Buttons** to a piece of yarn and tie it on. Make a colorful bead necklace or tissue-paper bow tie to wear with your mask. Add chenille stem eye glasses. Use **3332 Peel & Stick Making Faces** or **3333 Peel & Stick Critter Faces** stickers to add funky eyebrows, eyelashes, nose and ears.

Roylco makes many other fun and educational products for parents, teachers and children. Write to us for a free catalog featuring the rest of our product line. Look for the following products at your local educational supply store, mail order company, craft and hobby shop or toy store:

**5845 Unruly Rulers**

**2040 Animal Face Buttons**

**52004 Card Characters**

**2143 Really Big Buttons**

