

No. 5419

Paint Bellows

Create easy, no-mess pointillist masterpieces!

Paint Bellows are easy-to-use and reduce the amount of clean-up time. Results are excellent! Each Paint Bellow comes with an accordion bottle, tip and cap. Let's get started:

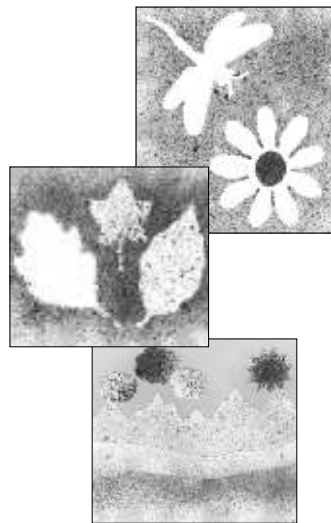
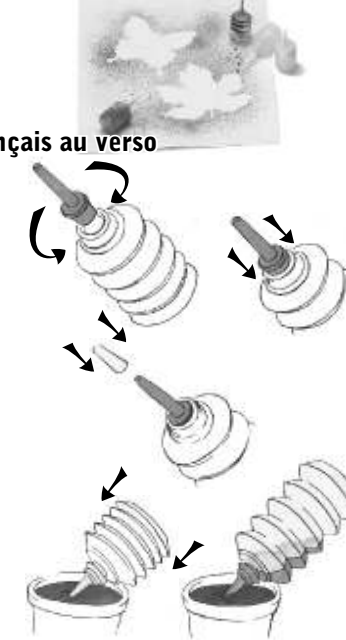
- Insert the blunt end of the tip into an empty accordion bottle. Note: It is a snug, air-tight fit, so be sure to snap the tip in place.
- Force the air out of the bottle and insert the end into an open jar of thick tempera paint. Release the pressure on the bottle so it sucks up a little paint. Note: You only need a few drops of thick paint—do not fill the bottle. Replenish your paint as needed.
- When finished painting, tightly fit the cap on the end of the tip and store until needed again. Paint will stay fresh while the cap is on.
- To clean, squeeze out as much paint as possible. Fill a bowl with water. Force the air out of the Paint Bellows. Place the end of the tip in the water. Release the pressure on the Paint Bellow so it sucks up some water. Place the cap on the end of the tip, swish the water around on the inside and carefully squirt out into a sink. Repeat until clean.

Activity and Project Ideas:

- Experiment with different techniques. To create a radial pattern, squirt in the same spot 10-20 times. For a soft look, spray on a sharp angle. Vary the size of your dots by increasing and decreasing the pressure you use to squirt.
- Make a reverse image. Lay a cardboard cut-out or stencil on a sheet of paper and squeeze out a fine mist of paint. Continue squeezing until you have covered the sheet with a layer of dots. Repeat the process with a second and third color.
- Design a lovely leaf print. Lay a leaf on a sheet of paper. Cover the sheet with a mist of paint. Add a second leaf and spray another color over top of the first. Repeat with a third leaf and color of paint.
- Create a colorful collage! Mist several sheets of paper with one or more colors of paint. Try out different dot densities and angles of projection. Tear and cut the new craft paper into interesting shapes. Layer and glue the shapes onto a solid colored paper.

Made in Canada/USA

Français au verso



www.roylco.com

Printed in Canada